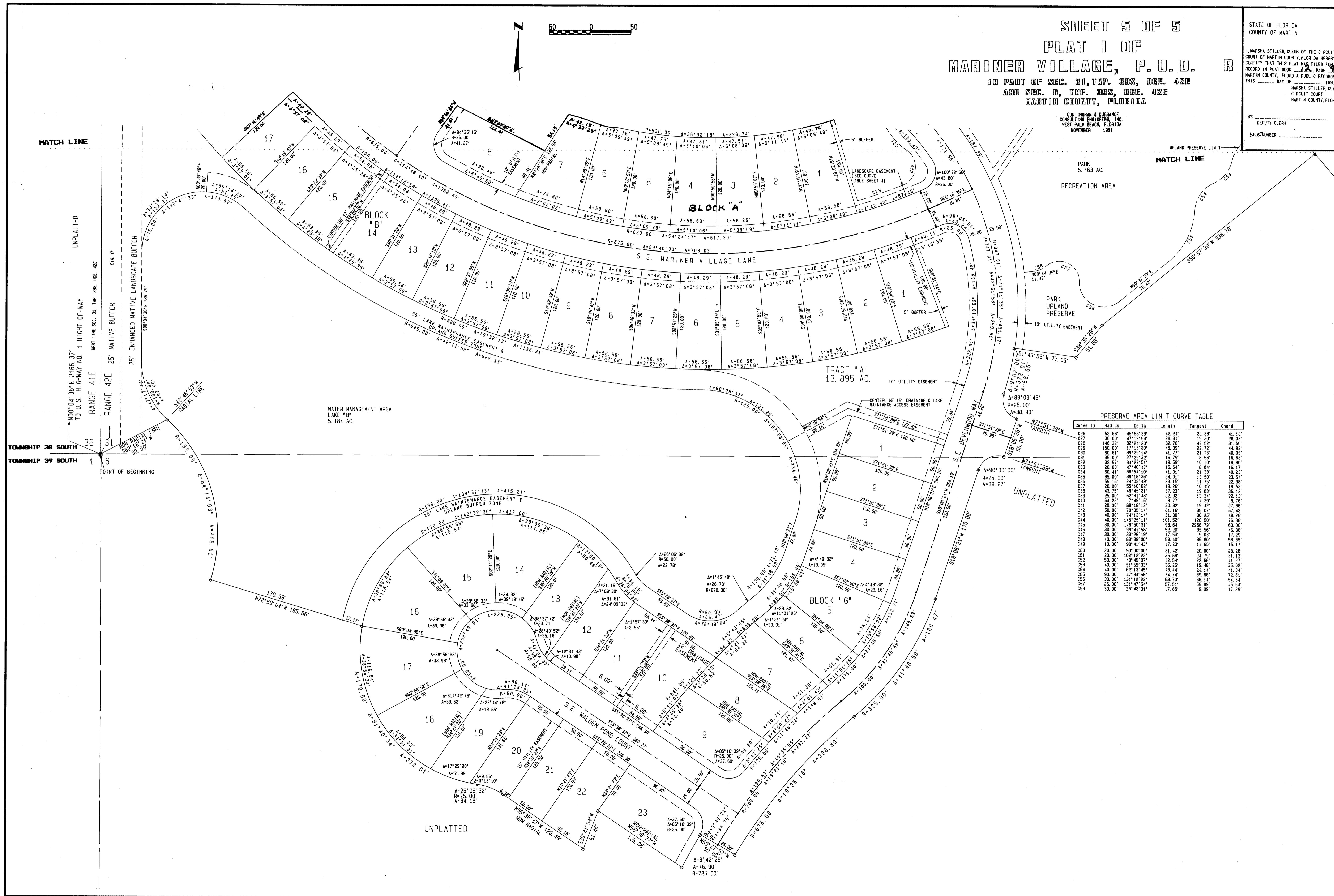
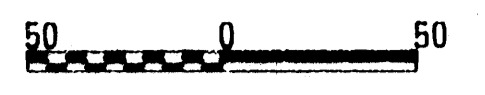


SHEET 5 OF 5
PLAT I OF
MARINER VILLAGE, P. U. D.
IN PART OF SEC. 30, TWP. 30S, R. 42E
AND SEC. 6, TWP. 30S, R. 42E
MARTIN COUNTY, FLORIDA

STATE OF FLORIDA
COUNTY OF MARTIN
I, MARSHA STILLER, CLERK OF THE CIRCUIT COURT OF MARTIN COUNTY, FLORIDA HEREBY CERTIFY THAT THIS PLAT WAS FILED FOR RECORD IN PLAT BOOK _____ PAGE _____ MARTIN COUNTY, FLORIDA PUBLIC RECORDS THIS _____ DAY OF _____ 1992.
MARSHA STILLER, CLERK
CIRCUIT COURT
MARTIN COUNTY, FLORIDA

CUN INGHAM & DURAND
CONSULTING ENGINEERS, INC.
WEST PALM BEACH, FLORIDA
NOVEMBER 1991

BY: _____
DEPUTY CLERK
FILE NUMBER: _____



PRESERVE AREA LIMIT CURVE TABLE

Curve ID	Radius	Delta	Length	Tangent	Chord
C26	52.68'	45°56'33"	42.24'	22.33'	41.12'
C27	35.00'	47°12'53"	28.84'	15.30'	28.03'
C28	146.32'	39°24'20"	82.76'	42.52'	81.66'
C29	150.00'	17°13'20"	45.09'	22.72'	44.32'
C30	60.61'	39°29'14"	41.77'	21.75'	40.95'
C31	35.00'	27°29'32"	16.79'	8.56'	16.63'
C32	32.57'	34°27'51"	19.59'	10.10'	19.30'
C33	20.00'	47°40'47"	16.64'	8.84'	16.17'
C34	60.41'	39°54'10"	41.01'	21.33'	40.23'
C35	26.00'	39°18'38"	24.01'	12.50'	23.54'
C36	55.16'	24°02'49"	23.15'	11.75'	22.98'
C37	20.00'	55°10'02"	19.26'	10.45'	18.52'
C38	43.75'	48°45'21"	37.23'	19.83'	36.12'
C39	25.00'	52°31'45"	22.92'	12.34'	22.13'
C40	64.22'	7°48'15"	4.39'	4.39'	8.76'
C41	20.00'	88°18'12"	30.82'	19.42'	27.86'
C42	50.00'	70°05'14"	61.16'	35.07'	57.42'
C43	40.00'	74°12'14"	51.80'	30.25'	48.25'
C44	40.00'	145°25'11"	101.52'	128.50'	76.38'
C45	30.00'	178°50'51"	93.64'	298.79'	60.00'
C46	30.00'	99°41'58"	52.20'	35.56'	45.85'
C47	30.00'	33°29'19"	17.53'	9.03'	17.29'
C48	40.00'	63°39'00"	58.40'	35.80'	53.35'
C49	10.00'	98°41'43"	17.23'	11.65'	15.17'
C50	20.00'	80°00'00"	31.42'	20.00'	28.28'
C51	20.00'	102°12'22"	35.68'	24.79'	31.13'
C52	50.00'	48°45'07"	42.54'	22.66'	45.27'
C53	40.00'	51°55'33"	36.25'	19.48'	35.02'
C54	40.00'	62°13'45"	43.44'	24.14'	41.34'
C55	90.00'	47°34'58"	74.74'	39.68'	72.61'
C56	30.00'	131°12'22"	68.70'	66.14'	54.64'
C57	25.00'	131°47'54"	57.51'	55.89'	45.64'
C58	30.00'	33°42'01"	17.65'	9.03'	17.39'